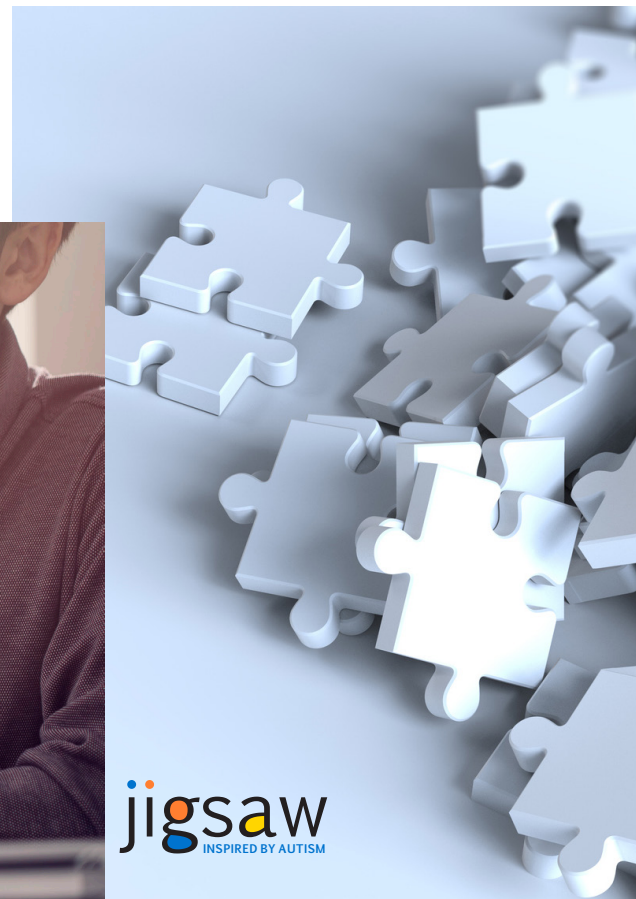


JigsawPlus

Specialist day services for autistic adults aged 18+



JigsawPlus is dedicated and passionate in its commitment to support autistic adults to make positive, personal choices that enhance their wellbeing, independence and social inclusion

JigsawPlus Specialist Day Services, established in 2012, operates from our Centre for Lifelong Learning, near Cranleigh, Surrey, delivering individualised programmes supporting key living and life skills, community-focused learning and vocational opportunities to the adults accessing our services.

JigsawPlus is open for 49 weeks of the year.

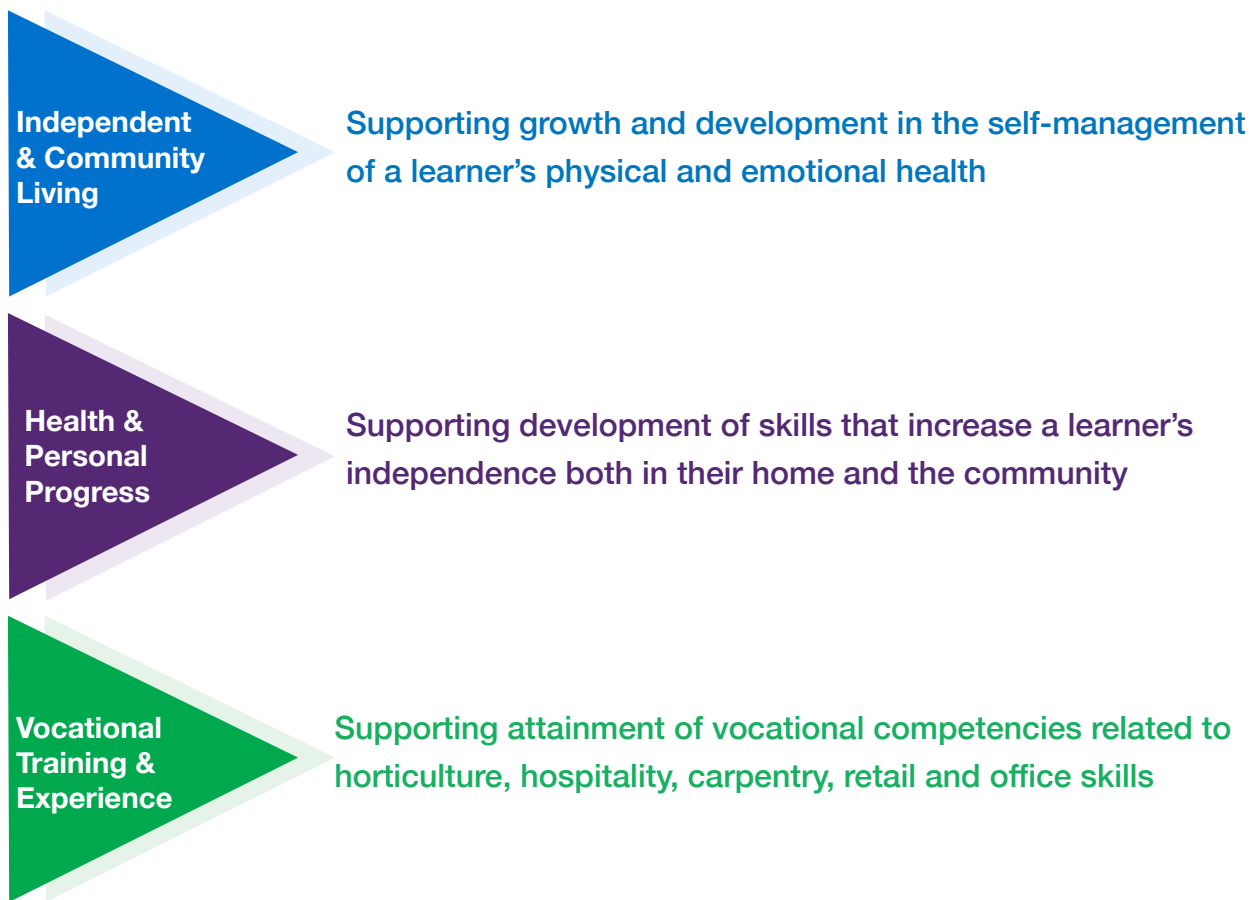
LIFELONG LEARNING

- Person-centred development plans are created with each learner and based around their particular skills, needs and preferences.
- Central to each plan are: communication, self-managing behaviour, instilling confidence, supporting problem solving and reliable execution of the learning.
- Each individual plan is agreed with targets selected from a menu of learning development skills, grouped into 6 outcome areas.
- Learners work closely with their Learning Support Workers towards their targets, promoting meaningful and beneficial outcomes.



In practice, the 'learning wheel' areas are not viewed in isolation as they are interwoven into multiple aspects of each development plan.

They sit more broadly under 3 main headings



JIGSAW ENTERPRISES

A route to the acquisition of new skills and progress towards accessing meaningful vocational opportunities in the community

Café on the Park and Bakery

Learners have the opportunity to experience life within a busy catering environment and are encouraged to learn how to serve and positively interact with customers. In the Bakery, under the tutelage of Chef, they learn about the art and science of baking where attention is given to technique, measurement, temperature and quality as well as food hygiene and general kitchen skills. They learn to follow a recipe and make a variety of cakes, biscuits and breads which are subsequently sold in the Café or taken home to be enjoyed by family and friends.

● **GARDENworks Horticultural Centre**

- Learners benefit from this outdoor Enterprise whilst
- learning the fundamentals of horticulture and general
- gardening. They are taught how to nurture and care
- for a wide variety of plants, vegetables, herbs, fruits
- and flowers, spend time practising specific skills
- to enable them to undertake jobs such as seed
- sowing, bulb planting, watering, weeding, pruning
- and harvesting. Sessions also include learning
- about wildlife, nature's lifecycles and how what they
- do enhances the world around them.
-
-
-

The charity

Jigsaw Trust is the overarching charity supporting the delivery of a range of services to autistic children and adults through **Jigsaw CABAS® School, JigsawPlus and Jigsaw Enterprises.**

Founded on the principle of excellence through continual learning, Jigsaw aspires to provide the highest quality of education and lifelong learning possible; to accelerate learning and the ability to learn in new ways as well as acquiring the skills to learn independently through behavioural methods.

The Trust was set up as a registered UK charity in 1999, by a group of parents of children with an autism diagnosis. In the same year it opened the Jigsaw CABAS School to its first six children - today the school has provision for up to 80 pupils, aged 4 to 19 years.

Since 2012 the Trust has supported JigsawPlus delivering specialist day services for autistic adults aged 18+.

The future

'Wrap around' support services, including Respite Care, Domiciliary Care, Independent Living and Housing, are all written into Jigsaw Trust's long term strategic development plan. Training, research and staff expertise within the fields of autism and behaviour analysis underpin all the services offered by Jigsaw ensuring the delivery of excellence to all our learners and their families.



APPLYING FOR A PLACEMENT AT JIGSAWPLUS

Jigsaw has a dedicated and specialist Admissions Team under the lead of our Head of Admissions who has many years' experience working with Local Authorities and a thorough understanding of the complexities of the whole process within the current landscape.

For information about the **admissions process** and **open mornings** visit

jigsawplus.co.uk/admissions

If you would prefer to talk to someone, please telephone our Admissions Team on 01483 277366

jigsawplus.co.uk

JigsawPlus, Centre for Lifelong Learning, Building 203 Dunsfold Park, Stovolds Hill, Cranleigh, Surrey GU6 8GA

JigsawPlus is a registered UK charity no. 1151727