

JigsawPlus

Specialist day services for
autistic adults aged 18+

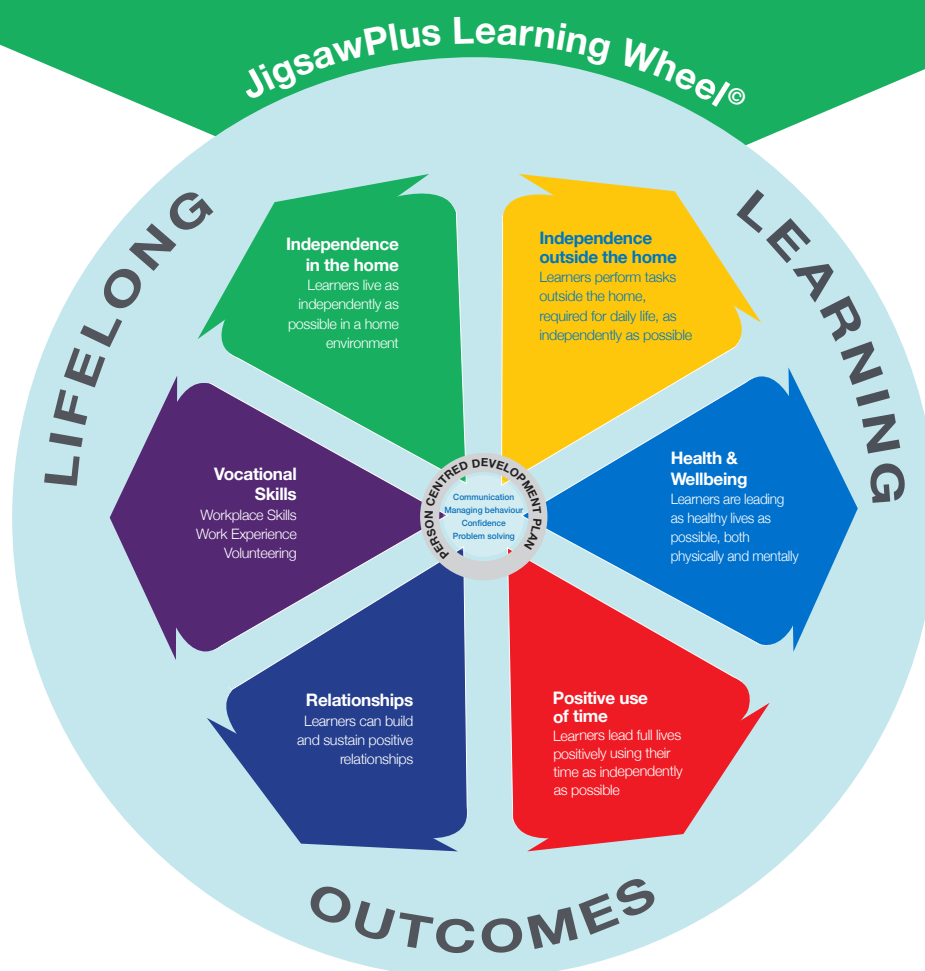
JigsawPlus is dedicated and passionate in its commitment to support autistic adults to make positive, personal choices that enhance their wellbeing, independence and social inclusion

JigsawPlus Specialist Day Services, established in 2012, operates from our Centre for Lifelong Learning, near Cranleigh, Surrey, delivering individualised programmes supporting key living and life skills, community-focused learning and vocational opportunities to the adults accessing our services.

JigsawPlus is open for 49 weeks of the year.

LIFELONG LEARNING

- Person-centred development plans are created with each learner and based around their particular skills, needs and preferences.
- Central to each plan are: communication, self-managing behaviour, instilling confidence, supporting problem solving and reliable execution of the learning.
- Each individual plan is agreed with targets selected from a menu of learning development skills, grouped into 6 outcome areas.
- Learners work closely with Learning Support Workers towards their targets, promoting meaningful and beneficial outcomes.



Learning Wheel targets are not viewed in isolation as they are interwoven into multiple aspects of each development plan. They are captured within the following **Progress Awards** that learners receive in acknowledgement of their acquisition, advancement and generalisation of desired learning development skills.



Supporting growth and development in the self-management of a learner's physical and emotional health

Fitness and exercise • diet and nutrition • relationships and social skills • communication skills • personal hygiene and wellbeing • self-management of challenging behaviour



Supporting development of skills that increase a learner's independence both in their home and the community

Food preparation • finance management • home maintenance • shopping and dining out • functional literacy and numeracy • developing hobbies and pastimes • art and music



Supporting attainment of vocational competencies related to horticulture, hospitality, carpentry, retail and office skills

Jigsaw GARDENworks • Jigsaw Café on the Park work experience • baking sessions • shop work experience • volunteering • office work • stable work

JIGSAW ENTERPRISES

A route to the acquisition of new skills and progress towards accessing meaningful vocational opportunities in the community

Café on the Park

The Café provides opportunities to experience life within a busy catering environment. Learners are encouraged to work 'front of house' serving and interacting with customers. In the kitchen they learn about food hygiene and general kitchen skills, as well as the art and science of baking where attention is given to technique, measurement, temperature and quality - following a recipe and making a variety of cakes, biscuits and breads which are subsequently sold in the Café.

GARDENworks Horticultural Centre

- Learners can benefit from this outdoor Enterprise whilst learning the fundamentals of horticulture and general gardening. They are taught how to nurture and care for a wide variety of plants, vegetables, herbs, fruits and flowers, spend time practising specific skills to enable them to undertake jobs such as seed sowing, bulb planting, watering, weeding, pruning and harvesting. Sessions also include learning about wildlife, nature's lifecycles and how what they do enhances the world around them.
-
-
-

Jigsaw Trust

Since 2012 the Trust has supported JigsawPlus delivering specialist day services for autistic adults aged 18+.

Jigsaw Trust supports the delivery of a range of services to autistic children and adults through **Jigsaw CABAS® School, JigsawPlus and Jigsaw Enterprises.**

Founded on the principle of excellence through continual learning, Jigsaw aspires to provide the highest quality of education and lifelong learning possible; to accelerate learning and the ability to learn in new ways as well as acquiring the skills to learn independently through behavioural methods.

The Trust was set up as a registered UK charity in 1999, by a group of parents of children with an autism diagnosis. In the same year it opened the Jigsaw CABAS School to its first six children - today the school has provision for up to 80 pupils, aged 4 to 19 years.

APPLYING FOR A PLACEMENT AT JIGSAWPLUS

Jigsaw has a dedicated and specialist Admissions Team under the lead of our Admissions Manager who is experienced in working with Local Authorities and has a thorough understanding of the complexities of the whole admissions process within the current landscape.

For information about the **admissions process** and **open mornings** visit

jigsawplus.co.uk/admissions

If you would prefer to talk to someone, please telephone our Admissions Team on 01483 277366

The Future

'Wrap around' support services, including Respite Care, Domiciliary Care, Independent Living and Housing, are all written into Jigsaw Trust's long term strategic development plan. Training, research and staff expertise within the fields of autism and behaviour analysis underpin all the services offered by Jigsaw ensuring the delivery of excellence to all our learners and their families.



jigsawplus.co.uk

JigsawPlus, Centre for Lifelong Learning, Building 203 Dunsfold Park, Cranleigh, Surrey GU6 8GA

JigsawPlus is a registered UK charity no. 1151727